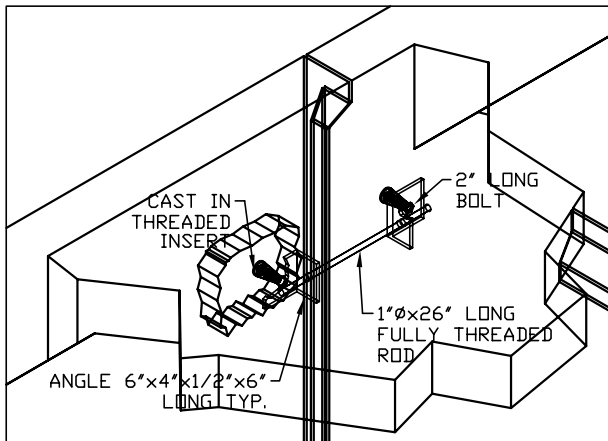




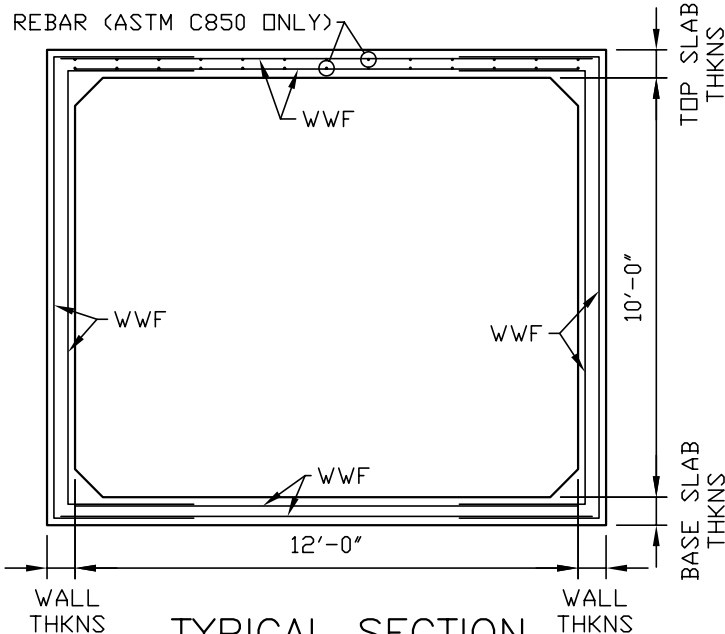
Concrete Systems Inc.
9 Commercial St., Hudson, NH, 03051
Phone 603-889-4163
Fax 603-889-0039

12' X 10' Storage Tank Single Cell



CLOSURE HARDWARE
DETAIL

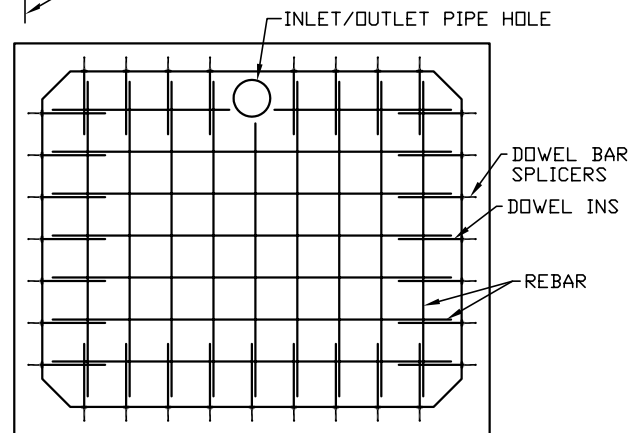
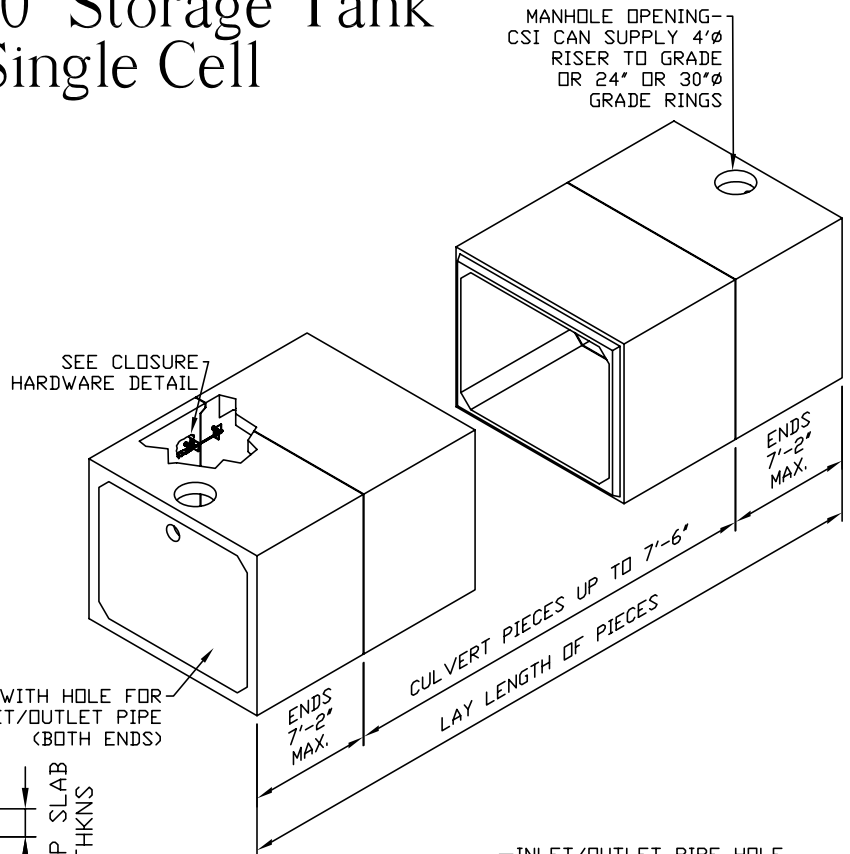
ENDWALL WITH HOLE FOR
INLET/OUTLET PIPE
(BOTH ENDS)



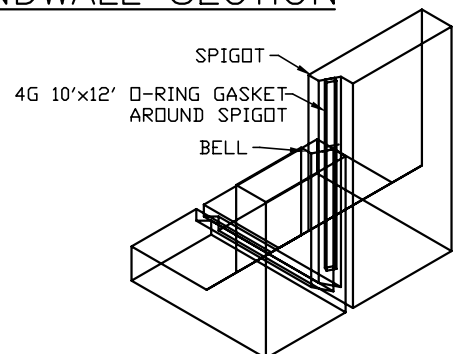
TYPICAL SECTION

GENERAL NOTES:

1. Structure designed and built in accordance with ACI 318-99 "Building Code Requirements for Structural Concrete" and ASTM C789 or C850. Other design codes: AASHTO, AREA, FAA Airport Loading & BOCA as required.
2. Design Parameters:
Live load: As specified
Earth Cover: Per job condition
Concrete: Design strength $f'_c = 5000$ psi
Unit weight = 150 pcf
Reinforcing: ASTM A615 (Rebar) Grade 60
ASTM A185 (Welded Wire Fabric) Grade 70
3. Exterior dampproofing can be supplied by CSI.



ENDWALL SECTION



JOINT DETAIL